

Just Camp Low Profile Opel/Citroën



Some decisions are easy. For example, the new Just Camp! With its chic new design, good equipment and many fresh ideas, it makes it easy to get started in caravanning. Seven different layout solutions also contribute to this, covering the most diverse wishes and requirements for the type of mobile life. The new Just Camp is available on the basis of the Citroën Jumper or Opel Movano.

Technical info

Overall length, approx.	696 - 741 cm
Overall width, approx.	233 cm
Overall height, approx.	294 cm
Headroom in living area, approx.	213 cm

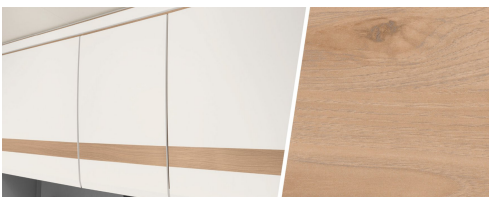
Maximum values partly not possible for all models or only in connection with certain options.

Upholstery



+ Upholstery Drake

Wood décor



+ Wood décor Noce Nagano

Plus factors

- + Proven Lifetime body construction with GRP outer skin and excellent insulation
- + 70 cm wide habitation door with central locking
- + Interior height 2.13 m (not below pull-down bed)
- + Pleasant sleeping comfort due to 150 mm thick 7-zone cold foam mattresses made of climate-regulating material and ergonomic wooden slatted frames



Just Camp Low Profile Opel/Citroën

Technical info



Just Camp Low Profile Opel/Citroën		T 6752 DBL	T 6762	T 6812 EB
Standard chassis		Citroen Jumper Light Low Platform	Citroen Jumper Light Low Platform	Citroen Jumper Light Low Platform
Emission standards		Euro 6d Final	Euro 6d Final	Euro 6d Final
Overall length, approx.	cm	696	696	696
Overall width, approx.	cm	233	233	233
Overall height, approx.	cm	294 ¹⁾	294 ¹⁾	294 ¹⁾
Headroom in living area, approx.	cm	213	213	213
Towable load braked/unbraked	kg	2000 / 750	2000 / 750	2000 / 750
Wheelbase, approx.	mm	4035	4035	3800
Bed dimension: Front bed, L x W, approx.	cm	200 x 140 ○	200 x 150	200 x 140 - 120 ○
Bed dimension: Central / middle bed, L X W, approx.	cm	200 x 110 - 90 ○	210 x 120 ○	210 x 105 - 70 ○
Bed dimension: Rear bed, L x W, approx.	cm	190 x 150		198 x 80 / 200 x 80 / 210 x 170 ○
Sleeping berths standard / max.		2 / 5 ○	2 / 4 ○	2 / 5 ○
Standard engine		BlueHDi 140	BlueHDi 140	BlueHDi 140
kW (bhp)		102 (140)	102 (140)	102 (140)
Mass in running order (+/-5%)*	kg	2840 (2698 to 2982)*	2860 (2717 to 3003)*	2790 (2651 to 2930)*
Manufacturer-specified mass for optional equipment*	kg	324	304	374
Technically permissible maximum laden mass*	kg	3499	3499	3499
Permitted number of seats (including driver)*		4	4	4 - 5 ○
Refrigerator volume (thereof freezer), approx.	l	137 (15) / 137 (15) ○	137 (15)	137 (15)
Waste water tank, approx.	l	90	90	90
Fresh water tank capacity, total/ Fresh water tank capacity at driving filling	l	116 / 20	116 / 20	116 / 20
Measurement storage opening left (W x H)	cm	75 x 65 ○	55 x 170	75 x 95 ○
Measurement storage opening right (W x H)	cm	75 x 85	60 x 115	75 x 115



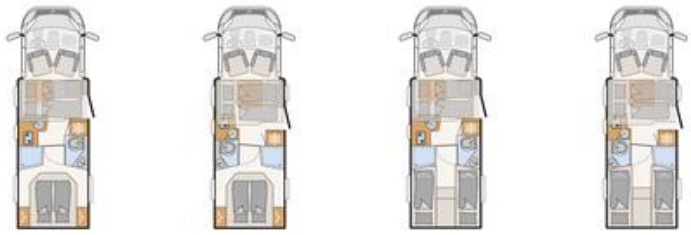
* INFO

The specified mass in running order is a default value defined in the type-approval procedure. Due to manufacturing tolerances, the actual weighed mass in running order may deviate from the value stated above. Deviations of up to ± 5 % of the mass in running order are legally permissible and possible. The permissible range in kilograms is given in brackets after the mass in running order. The manufacturer-specified mass for optional equipment is a calculated value for each type and layout that Dethleffs uses to determine the maximum weight available for factory-fitted optional equipment. The limitation of optional equipment is intended to ensure that the minimum pay-mass, i.e. the legally prescribed free mass for baggage and retrofitted accessories, is actually available for the vehicle load capacity of the vehicles delivered by Dethleffs. The real weight of your vehicle ex works can only be determined when it is

weighed at the end of the line. If, in exceptional cases, the weighing shows that the actual load capacity falls below the minimum pay-mass despite limiting the optional equipment due to a permissible weight deviation, we will check together with your trade partner and you whether we should, for example, increase the load capacity of the vehicle, reduce the number of seats or remove optional equipment before delivering the vehicle. The technically permissible maximum laden mass of the vehicle and the technically permissible maximum mass on the axle must not be exceeded. Detailed information & explanations on the subject of weight and the configuration of the vehicle can be found in the section Legal information. For a more detailed description of all mandatory technical dependencies, please refer to the explanations on the footnotes.

Just Camp Low Profile Opel/ Citroën

Technical info



Just Camp Low Profile Opel/Citroën		T 7052 DBM	T 7052 DBL	T 7052 EB	T 7052 EBL
Standard chassis		Citroen Jumper Light Low Platform	Citroen Jumper Light Low Platform	Citroen Jumper Light Low Platform	Citroen Jumper Light Low Platform
Emission standards		Euro 6d Final	Euro 6d Final	Euro 6d Final	Euro 6d Final
Overall length, approx.	cm	741	741	741	741
Overall width, approx.	cm	233	233	233	233
Overall height, approx.	cm	294 ¹⁾	294 ¹⁾	294 ¹⁾	294 ¹⁾
Headroom in living area, approx.	cm	213	213	213	213
Towable load braked/unbraked	kg	2000 / 750	2000 / 750	2000 / 750	2000 / 750
Wheelbase, approx.	mm	4035	4035	4035	4035
Bed dimension: Front bed, L x W, approx.	cm	200 x 140 - 120 ○	200 x 140 ○	200 x 140 - 120 ○	200 x 140 ○
Bed dimension: Central / middle bed, L X W, approx.	cm	210 x 120 - 80 ○	206 x 110 - 90 ○	210 x 120 - 80 ○	206 x 110 - 90 ○
Bed dimension: Rear bed, L x W, approx.	cm	190 x 150	190 x 150	2x 215 x 80 / 210 x 190 ○	2x 215 - 195 x 80 / 210 x 190 ○
Sleeping berths standard / max.		2 / 5 ○	2 / 5 ○	2 / 5 ○	2 / 5 ○
Standard engine		BlueHDi 140	BlueHDi 140	BlueHDi 140	BlueHDi 140
kW (bhp)		102 (140)	102 (140)	102 (140)	102 (140)
Mass in running order (+/-5%)*	kg	2840 (2698 to 2982)*	2900 (2755 to 3045)*	2840 (2698 to 2982)*	2900 (2755 to 3045)*
Manufacturer-specified mass for optional equipment*	kg	320	260	320	260
Technically permissible maximum laden mass*	kg	3499	3499	3499	3499
Permitted number of seats (including driver)*		4 - 5 ○	4	4 - 5 ○	4
Refrigerator volume (thereof freezer), approx.	l	137 (15) / 137 (15) ○	137 (15) / 137 (15) ○	137 (15) / 137 (15) ○	137 (15) / 137 (15) ○
Waste water tank, approx.	l	90	90	90	90
Fresh water tank capacity, total/ Fresh water tank capacity at driving filling	l	116 / 20	116 / 20	116 / 20	116 / 20
Measurement storage opening left (W x H)	cm	95 x 95 ○	95 x 95 ○	95 x 95 ○	95 x 95 ○
Measurement storage opening right (W x H)	cm	95 x 115	95 x 115	95 x 115	95 x 115

○ Optional equipment — Not possible ● Standard equipment ◆ Mandatory △ Not known at the time of publication



* INFO

The specified mass in running order is a default value defined in the type-approval procedure. Due to manufacturing tolerances, the actual weighed mass in running order may deviate from the value stated above. Deviations of up to ± 5 % of the mass in running order are legally permissible and possible. The permissible range in kilograms is given in brackets after the mass in running order. The manufacturer-specified mass for optional equipment is a calculated value for each type and layout that Dethleffs uses to determine the maximum weight available for factory-fitted optional equipment. The limitation of optional equipment is intended to ensure that the minimum pay-mass, i.e. the legally prescribed free mass for baggage and retrofitted accessories, is actually available for the vehicle load capacity of the vehicles delivered by Dethleffs. The real weight of your vehicle ex works can only be determined when it is

weighed at the end of the line. If, in exceptional cases, the weighing shows that the actual load capacity falls below the minimum pay-mass despite limiting the optional equipment due to a permissible weight deviation, we will check together with your trade partner and you whether we should, for example, increase the load capacity of the vehicle, reduce the number of seats or remove optional equipment before delivering the vehicle. The technically permissible maximum laden mass of the vehicle and the technically permissible maximum mass on the axle must not be exceeded. Detailed information & explanations on the subject of weight and the configuration of the vehicle can be found in the section Legal information. For a more detailed description of all mandatory technical dependencies, please refer to the explanations on the footnotes.

Standard equipment

	T 675Z DBL	T 676Z	T 681Z EB	T 705Z DBM	T 705Z DBL	T 705Z EB	T 705Z EBL
Chassis Citroen / Opel							
Citroen Jumper Light / Opel Movano Light (3,499 kg) BlueHDi 2.2 l / 103 kW / 140 hp, 6-speed manual gearbox	●	●	●	●	●	●	●
Steel wheels 15" (215/70 R15C) incl. full wheel covers	●	●	●	●	●	●	●
Chassis equipment Citroen / Opel							
ABS (anti-lock braking system) / EBD (electronic brake force distribution)	●	●	●	●	●	●	●
Anti-theft device	●	●	●	●	●	●	●
Bumper and door handles painted in white	●	●	●	●	●	●	●
Captain seat, double armrests, swivel function with height and tilt adjustment for driver and front passenger seat	●	●	●	●	●	●	●
Chrome-plated radiator grille	●	●	●	●	●	●	●
Cruise control	●	●	●	●	●	●	●
Cup holder in the centre of the dashboard	●	●	●	●	●	●	●
DAB+ radio antenna integrated into right exterior mirror	●	●	●	●	●	●	●
Dashboard with chrome rings	●	●	●	●	●	●	●
Daytime running lights integrated into headlights	●	●	●	●	●	●	●
Diesel tank 90 litre incl. 19L AdBlue tank	●	●	●	●	●	●	●
Driver and passenger airbags	●	●	●	●	●	●	●
Driver's cab manual A/C	●	●	●	●	●	●	●
ESP incl. ASR, Traction Plus, Hill Holder and Hill Descent Control	●	●	●	●	●	●	●
Electrically adjustable and heated exterior mirrors incl. blind spot mirror and integrated turn indicator	●	●	●	●	●	●	●
Exterior colour chassis polar white	●	●	●	●	●	●	●
Fix&Go kit (tyre repair kit)	●	●	●	●	●	●	●
Front-wheel drive	●	●	●	●	●	●	●
Preparation for radio system incl. loudspeakers in the driver's cabin	●	●	●	●	●	●	●
Rear axle mudflaps	●	●	●	●	●	●	●
Tyre Pressure Monitoring System (TPMS)	●	●	●	●	●	●	●
Widened rear axle	●	●	●	●	●	●	●
Exterior features							
70 cm wide habitation door	●	●	●	●	●	●	●
Dethleffs Exclusive rear light carrier with 3rd brake light	●	●	●	●	●	●	●
EPS insulation	●	●	●	●	●	●	●
Floor thickness: 49 mm, side wall thickness: 34mm and roof thickness: 35 mm	●	●	●	●	●	●	●
Flyscreen habitation door	●	●	●	●	●	●	●
GRP roof	●	●	●	●	●	●	●
Large rear garage: right-hand garage door with turn/tighten lock, rear lowering (150 kg surface load), anti-slip surface, heated, lashing strips, illuminated, 1x 230 V socket	●	—	●	●	●	●	●
Large rear garage: two garage doors/flaps with turn/tighten lock, rear lowering (150 kg surface load), anti-slip surface, heated, lashing strips, illuminated, 1x 230 V socket	—	●	—	—	—	—	—
Lifetime construction technology: Tried-and-tested reliable flooring and superstructure with excellent insulation	●	●	●	●	●	●	●
Side panels and rear panel made of resistant high-gloss GRP with smooth, shiny surface	●	●	●	●	●	●	●
Skylight 40 x 40 cm above the seating lounge	●	●	●	●	●	●	●
Exterior design							
Exterior body painted in white	●	●	●	●	●	●	●
Interior design							
Upholstery Drake	●	●	●	●	●	●	●
Wood décor Noce Nagano	●	●	●	●	●	●	●
Textile equipment							
Fixed beds with ergonomic wooden slatted frames and 150 mm thick 7-zone premium mattresses made of climate-regulating material	●	●	●	●	●	●	●
Furniture layouts							
Cosy lounge seating group with free-standing, rigid table base	●	●	—	—	●	—	●
Double bed low	●	—	—	—	—	—	—
Electric pull-down bed across the seating unit ¹⁶⁾	—	●	—	—	—	—	—
Height-adjustable double bed	—	—	—	●	●	—	—

Standard equipment

	T 6752 DBL	T 6762	T 6812 EB	T 7052 DBM	T 7052 DBL	T 7052 EB	T 7052 EBL
High-level single beds incl. comfortable access via steps	—	—	●	—	—	●	●
Overhead locker doors with soft-close function	●	●	●	●	●	●	●
Seating area with mountable and extendible table and two integrated 3-point seatbelts	—	—	●	●	—	●	—
Wardrobe floor-to-ceiling with convenient linen drawers in upper area	—	●	—	—	—	—	—
Wardrobe to the left and right of the queen-size bed	●	—	—	●	●	—	—
Kitchen							
Floor-to-ceiling fridge with separate freezer compartment and automatic energy selection (AES) (137 l)	●	●	●	●	●	●	●
Gourmet kitchen: two-ring hob, large drawers, cutlery tray, bin and generous worktop	●	●	●	●	●	●	●
MultiFlex rail system incl. hooks (further accessories via Dethleffs Original Accessories)	●	●	●	●	●	●	●
Bathroom							
Equipped with cabinets, storage compartments, large mirrors, toothbrush mug and toilet paper holder	●	●	●	●	●	●	●
Large bathroom with separate shower and toilet with locking door to the lounge	●	●	—	●	●	●	●
Swiveling bathroom wall for optimal use of space	—	—	●	—	—	—	—
Heating							
Gas hot-air heating 6kW with hot-water boiler	●	●	●	●	●	●	●
Heating in the seating unit for optimum heat distribution, built-in	●	●	●	●	●	●	●
Electrical installation							
Automatic switch-on/disconnect for starter battery, leisure battery and refrigerator	●	●	●	●	●	●	●
Awning light 12 V	●	●	●	●	●	●	●
Electric block with integrated overvoltage protection and separate ground fault circuit breaker	●	●	●	●	●	●	●
LED lighting throughout the vehicle	●	●	●	●	●	●	●
Leisure battery AGM, 95 Ah	●	●	●	●	●	●	●
Number of sockets 1x 12V, 7x 230V, 4x USB	—	●	—	—	—	—	—
Number of sockets 1x 12V, 8x 230V, 4x USB	—	—	●	●	—	●	—
Number of sockets 1x 12V, 8x 230V, 5x USB	●	—	—	—	●	—	●
On-board control panel	●	●	●	●	●	●	●
Spotlights in the roof lining above the habitation door	●	●	●	●	●	●	●
Water supply							
Fresh water tank in insulated and heated area	●	●	●	●	●	●	●
Submersible pump	●	●	●	●	●	●	●
Gas supply							
Storage space for 2 gas bottles with a filling weight of 11 kg each	●	●	●	●	●	●	●

PACKAGES JUST CAMP LOW PROFILE OPEL/CITROËN

Package	Package One, 4 m awning (12126)	Package One, 4,5 m awning (12126)	Package X (awning 4.0 m) (11936)	Package X (awning 4.5 m) (11936)
Automatic HD satellite system 65 Twin	x	x		
Flat screen 22" HD TV (incl. DVD player, HDMI, DVB-S2 satellite receiver and terrestrial DVB-T2 receiver)	x	x		
Flat-screen TV bracket	x	x		
Rear view camera (single camera)	x	x	x	x
Omnistor cassette awning 4.0 m (manual)	x		x	
Omnistor cassette awning 4.5 m (manual)		x		x
Additional weight (kg)*	51.6	55.6	35.1	39.1

Package	Family Package T 6812, 7052 EB (13881)	Family Package T 6752 DBL (13881)	Family Package T 7052 DBL (13881)	Family Package T 6762 (13881)	Family Package T 7052 EBL (13881)	Family Package T 7052 DBM (13881)
Opening window in T-hood	x	x	x	x	x	x
Habitation door with window incl. blackout and central locking (incl. cab door)	x	x	x	x	x	x
Cab blackout blinds	x	x	x	x	x	x
Panorama skylight 70 x 50 cm in the living area	x	x	x	x	x	x
Indirect ambient lighting above the overhead lockers	x	x	x	x	x	x
Indirect ambient lighting on the walls	x	x	x	x	x	x
Option to convert single beds to double bed	x				x	
Cosy L-shaped seating group with free-standing, lowerable table base and 2 integrated 3-point belts	x					x
Access locker door left	x		x		x	x
Access locker door left		x				
Additional weight (kg)*	45.5	27.5	29.5	21.5	37.5	37.5



* INFO

The factory installation of optional equipment increases the actual mass of the vehicle and reduces the pay-mass. The additional weight indicated for packages and optional equipment shows the additional weight compared to the standard equipment of the respective model or layout. The total weight of the selected optional equipment must not exceed the manufacturer-specified mass for

optional equipment shown in the model overviews. This is a calculated value for each type and layout that Dethleffs uses to determine the maximum weight available for factory-fitted optional equipment. Detailed information and explanations on the subject of weight can be found in the Legal information section.

Package	Winter Comfort Package hot-air heating Just Camp 6752 DBL, 6762, 6812 EB (8251)	Winter Comfort Package hot-air heating Just Camp 7052 (8251)
Insulated under-floor pipes	x	x
Waste water tank and pipes electrically heated	x	x
Insulated waste water tank	x	x
Switch for water pump	x	x
Gas hot-air heating 6kW with 1.8kW electric heating element and hot-water boiler incl. digital control panel	x	x
XPS insulation	x	
XPS insulation		x
Additional weight (kg)*	27.7	28.7

Chassis Package (13880)

LED daytime running lights

Leather steering wheel and gear knob with leather sleeve

Driver's cab automatic A/C

Multifunctional steering wheel

Dashboard with aluminium application

Additional weight (kg)*

0.4

Assistance Package (13302)

Light Assist

High Beam Assist

Rain sensor

Emergency Brake Assist

Lane Keeping Assist

Traffic Sign Assist

Additional weight (kg)*

0.6

Pre-wiring kit (11350)

Pre-wiring for solar

Pre-wiring for roof A/C

Pre-wiring for satellite system

Pre-wiring for first reversing camera

Pre-wiring for second reversing camera

Additional weight (kg)*

7.6

△ Not known at the time of publication



* INFO

The factory installation of optional equipment increases the actual mass of the vehicle and reduces the pay-mass. The additional weight indicated for packages and optional equipment shows the additional weight compared to the standard equipment of the respective model or layout. The total weight of the selected optional equipment must not exceed the manufacturer-specified mass for

optional equipment shown in the model overviews. This is a calculated value for each type and layout that Dethleffs uses to determine the maximum weight available for factory-fitted optional equipment. Detailed information and explanations on the subject of weight can be found in the Legal information section.

Optional equipment**

	Included in package	Additional weight (kg)*	Code	T 6752 DBL	T 6762	T 6812 EB	T 7052 DBM	T 7052 DBL	T 7052 EB	T 7052 EBL
Chassis Citroen / Opel										
Alloy wheel Citroën / Opel 16", black	—	20	13427	○	○	○	○	○	○	○
Citroën Jumper / Opel Movano Light (3,499 kg) BlueHDi 2.2 l / 121 kW / 165 hp, 6-speed manual gearbox	—	0	165M	○	○	○	○	○	○	○
Weight upgrade										
Weight upgrade 3,650 kg	—	0	10769	○	○	○	○	○	○	○
Chassis equipment Citroen / Opel										
Additional seat ¹³⁾	—	14	435	—	—	○	○	—	○	—
Tow bar (check permissible gross towing weight for trailer operation)	—	66	273	—	—	—	○	○	○	○
Tow bar (check permissible gross towing weight for trailer operation)	—	61	273	○	○	—	—	—	—	—
Tow bar (check permissible gross towing weight for trailer operation)	—	64	273	—	—	○	—	—	—	—
Exterior features										
Access locker door left	FA-P	6	331	○	—	—	—	—	—	—
Access locker door left	FA-P	8	331	—	—	○	○	○	○	○
Bike rack for 3 bikes (lowerable)	—	21.1	7482	○	○	○	○	○	○	○
Bike rack for 3 bikes (rear)	—	9.6	938	○	○	○	○	○	○	○
Stable, double-glazed flush-fitting windows with integrated blinds and flyscreens	—	1	415	○	○	○	○	○	○	○
Furniture layouts										
Bed convert for seating lounge transverse	—	9	1944	—	○	—	—	—	—	—
Bed convert for seating lounge transverse	—	7	1944	—	—	○	—	—	—	—
Bed convert for seating lounge transverse	—	8.5	1944	—	—	—	○	—	○	—
Bed convert for seating lounge transverse	—	5.5	1944	○	—	—	—	○	—	○
Electric pull-down bed across the seating unit	—	72	680	—	—	○	○	—	○	—
Electric pull-down bed across the seating unit	—	77	680	○	—	—	—	○	—	○
ISOFIX child seat bracket for third and fourth seat facing direction of travel	—	4	8125	—	—	○	○	—	○	—
Option to convert single beds to double bed	FA-P	8	1883	—	—	○	—	—	○	○
Kitchen										
Fridge (137 l) with integrated oven	—	11	290	○	—	—	○	○	○	○
Bathroom										
Additional window in bathroom	—	5	372	○	●	—	○	○	○	○
Shower grid	—	2	1657	●	○	—	○	○	○	○
Shower grid	—	1.5	1657	—	—	○	—	—	—	—
Multimedia										
Dethleffs Moniceiver incl. DAB+, Apple CarPlay / Android Auto	—	2	11301	○	○	○	○	○	○	○
Dethleffs Naviceiver incl. DAB+, truck navigation and connection to on-board control panel	—	3.65	9582	○	○	○	○	○	○	○
Second reversing camera in rear moulding	—	1	11541	○	○	○	○	○	○	○
Heating										
Floor heating electric (partial)	—	5	763	○	○	○	○	○	○	○
Gas hot-air heating 6kW with 1.8kW electric heating element and hot-water boiler incl. digital control panel	WI-KO	1	330	○	○	○	○	○	○	○
Air Conditioning										
Roof A/C	—	40	609	○	○	○	○	○	○	○



The factory installation of optional equipment increases the actual mass of the vehicle and reduces the pay-mass. The additional weight indicated for packages and optional equipment shows the additional weight compared to the standard equipment of the respective model or layout. The total weight of the selected optional equipment must not exceed the manufacturer-specified mass for optional equipment shown in the model overviews. This is a calculated value for each type and layout that Dethleffs uses to determine the maximum weight available for factory-fitted optional equipment. Detailed information and

explanations on the subject of weight can be found in the Legal information section. An increase of load capacity increases the manufacturer-specified mass for optional equipment. The increase results from the higher pay-mass due to the alternative chassis. The increased tare weight of the alternative chassis and, in particular, the weight for any mandatory heavier engine variants (e.g. 180 hp) must be deducted from this. For a more detailed description of all mandatory technical dependencies, please refer to the explanations on the footnotes.

Optional equipment**

	Included in package	Additional weight (kg)*	Code	T 6752 DBL	T 6762	T 6812 EB	T 7052 DBM	T 7052 DBL	T 7052 EB	T 7052 EBL
Electrical installation										
Second leisure battery AGM, 95 Ah	—	27	830	○	○	○	○	○	○	○
Solar power system 100 watt	—	12.6	922	○	○	○	○	○	○	○
Water supply										
Insulated waste water tank	WI-KO	11	665	○	○	○	○	○	○	○
Switch for water pump	WI-KO	0.2	397	○	○	○	○	○	○	○
Gas supply										
Automatic gas cylinder switchover incl. crash sensor, EisEx and gas filter	—	2.5	1577	○	○	○	○	○	○	○
Packages										
Assistance Package	—	0.6	13302	○	○	○	○	○	○	○
Chassis Package	—	0.4	13880	○	○	○	○	○	○	○
Family Package T 6752 DBL	—	27.5	13881	○	—	—	—	—	—	—
Family Package T 6762	—	21.5	13881	—	○	—	—	—	—	—
Family Package T 6812, 7052 EB	—	45.5	13881	—	—	○	—	—	○	—
Family Package T 7052 DBL	—	29.5	13881	—	—	—	—	○	—	—
Family Package T 7052 DBM	—	37.5	13881	—	—	—	○	—	—	—
Family Package T 7052 EBL	—	37.5	13881	—	—	—	—	—	—	○
Package One, 4 m awning	—	51.6	12126	○	○	○	—	—	—	—
Package One, 4,5 m awning	—	55.6	12126	—	—	—	○	○	○	○
Package X (awning 4.0 m)	—	35.1	11936	○	○	○	—	—	—	—
Package X (awning 4.5 m)	—	39.1	11936	—	—	—	○	○	○	○
Pre-wiring kit	—	7.6	11350	○	○	○	○	○	○	○
Winter Comfort Package hot-air heating Just Camp 6752 DBL, 6762, 6812 EB	—	27.7	8251	○	○	○	—	—	—	—
Winter Comfort Package hot-air heating Just Camp 7052	—	28.7	8251	—	—	—	○	○	○	○
Miscellaneous										
Registration documents (CoC papers)	—	0	15152	◆	◆	◆	◆	◆	◆	◆

○ Optional equipment — Not possible ● Standard equipment ◆ Mandatory △ Not known at the time of publication

FA-P Family Package WI-KO Winter Comfort Package



The factory installation of optional equipment increases the actual mass of the vehicle and reduces the pay-mass. The additional weight indicated for packages and optional equipment shows the additional weight compared to the standard equipment of the respective model or layout. The total weight of the selected optional equipment must not exceed the manufacturer-specified mass for optional equipment shown in the model overviews. This is a calculated value for each type and layout that Dethleffs uses to determine the maximum weight available for factory-fitted optional equipment. Detailed information and

explanations on the subject of weight can be found in the Legal information section. An increase of load capacity increases the manufacturer-specified mass for optional equipment. The increase results from the higher pay-mass due to the alternative chassis. The increased tare weight of the alternative chassis and, in particular, the weight for any mandatory heavier engine variants (e.g. 180 hp) must be deducted from this. For a more detailed description of all mandatory technical dependencies, please refer to the explanations on the footnotes.

IMPORTANT INFORMATION FOR THE SELECTION OF YOUR MOTORHOMES

When buying a motorhome, camper van or urban vehicle (hereafter: motorhome), it is particularly important to choose the right layout and an appealing design. In addition, weight also plays an essential role. Family, friends, optional equipment, accessories and baggage – space must be available for all of these. At the same time, there are legal and technical limits to the configuration and load. Every motorhome is designed for a certain weight, which may not be exceeded during driving. For motorhome buyers, this raises the question: How should I configure my vehicle to accommodate passengers, baggage and accessories according to my needs without the vehicle exceeding this maximum weight? In order to make this decision easier for you, we provide you below with a few tips that are particularly important when selecting your vehicle from our portfolio:

1. The technically permissible maximum laden mass...

... is a value set by the manufacturer which the vehicle may not exceed. Dethleffs specifies a layout-related upper limit for the vehicle, which can vary from layout to layout (e.g. 3,500 kg, 4,400 kg). You can find the corresponding specification for each layout in the technical data.



Low Profile model overview

		Model 1	Model 2
Standard chassis		Fiat Ducato	Fiat Ducato
Emission standards		Euro 6d Final	Euro 6d Final
Overall length, approx.	cm	599	695
Overall width, approx.	cm	220	220
Overall height, approx.	cm	281	281
technically permissible maximum laden mass	kg	3499	3499
Mass in running order	kg	2.890 (2.746 - 3.035)*	2.982 (2.833 - 3.131)*
Permitted number of seats (including driver)		4	4
Manufacturer-specified mass for optional equipment	kg	245	149

2. The mass in running order...

... consists – to put it simply – of the basic vehicle with standard equipment plus a standard weight of 75 kg for the driver. It is legally permissible and possible for the mass in running order of your vehicle to deviate from the nominal value stated in the sales documents. The permissible tolerance is $\pm 5\%$. The permissible range in kilograms is given in brackets after the mass in running order. In order to provide you with full transparency regarding possible weight deviations, Dethleffs weighs each vehicle at the end of the line and informs your trade partner of your vehicle's weighing result for forwarding to you. Detailed explanations on the subject of mass in running order can be found in the "Legal Information" section.

3. The permitted number of seats (including driver)...

...is determined by the manufacturer in what is referred to as the type-approval procedure. This results in what is referred to as the mass of the passengers. For this, a standard weight of 75 kg per passenger (without driver) is calculated. Detailed explanations on the subject of mass of the passengers can be found in the "Legal Information" section



Low Profile model overview

		Model 1	Model 2
Standard chassis		Fiat Ducato	Fiat Ducato
Emission standards		Euro 6d Final	Euro 6d Final
Overall length, approx.	cm	599	695
Overall width, approx.	cm	220	220
Overall height, approx.	cm	281	281
technically permissible maximum laden mass	kg	3499	3499
Mass in running order	kg	2.890 (2.746 - 3.035)*	2.982 (2.833 - 3.131)*
● Permitted number of seats (including driver)		4	4
● Manufacturer-specified mass for optional equipment	kg	245	149

4. The manufacturer-specified mass for optional equipment...

... is a value set by Dethleffs per layout for the maximum mass of optional equipment that can be ordered. This limit is intended to ensure that the minimum pay-mass, i.e. the legally prescribed free mass for baggage and retrofitted accessories, is actually available for the vehicle load capacity of the vehicles delivered by Dethleffs. If, in exceptional cases, the weighing at the end of the line nevertheless shows that the actual load capacity falls short of the minimum pay-mass due to a permissible weight deviation, we will check together with your trade partner and you whether we should, for example, increase the load capacity of the vehicle, reduce the number of seats or remove optional equipment before delivering the vehicle. Detailed explanations on the subject of the effects of the tolerances on the minimum pay-mass and the payload can be found in the "Legal Information" section.

Optional extra

		Price €	Additional weight	Code	Model 1	Model 2
Bathroom						
Shower grid	—	359,-	9	1385	—	○
Additional window in bathroom	—	269,-	5	9845	○	○
Multimedia						
Automatic HD satellite system 65 Twin	—	549,-	15	713	○	—
Dethleffs Naviceiver incl. DAB+, truck navigation and connection to on-board control panel		238,-	1.5	1657	○	●

5.5. The additional weight of optional equipment and packages...

... increases the actual mass of the vehicle (= mass in running order plus selected optional equipment) and reduces the pay-mass. The specified value shows the additional weight compared to the standard equipment of the respective layout. The total weight of the selected packages and optional equipment must not exceed the manufacturer-specified mass for optional equipment."